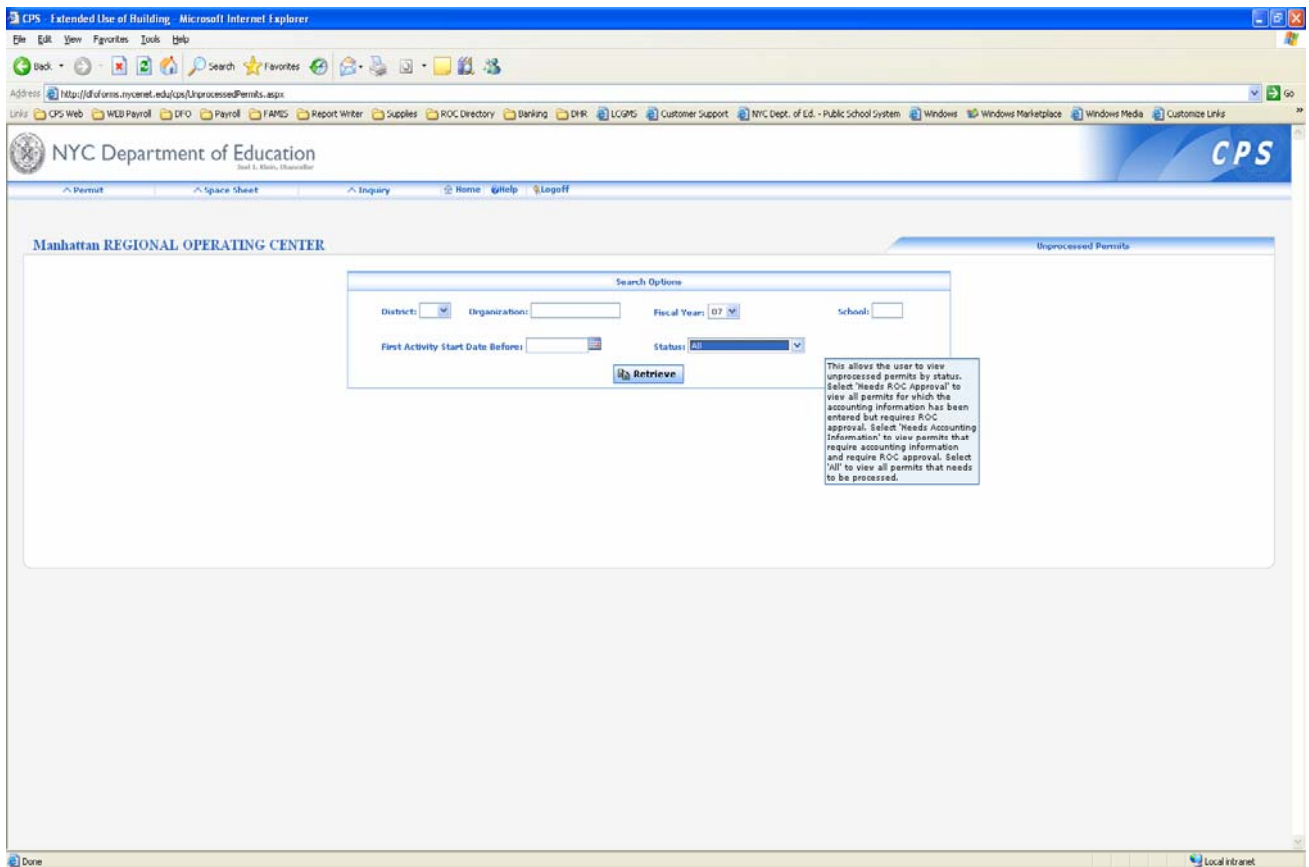


CPS Extended Use

ROC Unprocessed Screen - Approval Function

As requested, we have added an approval function for the ROC on the ROC Unprocessed Screen. User functionality for the ROC unprocessed screen depends on the ROC user's CPS Extended Use access.

A user with approval security will be able to view unapproved permits in the unprocessed screen as follows:



We have added a status field which groups the unprocessed permits as:

- Needs accounting information
- Needs ROC approval
- All

A mouse over note is also available to describe this field.

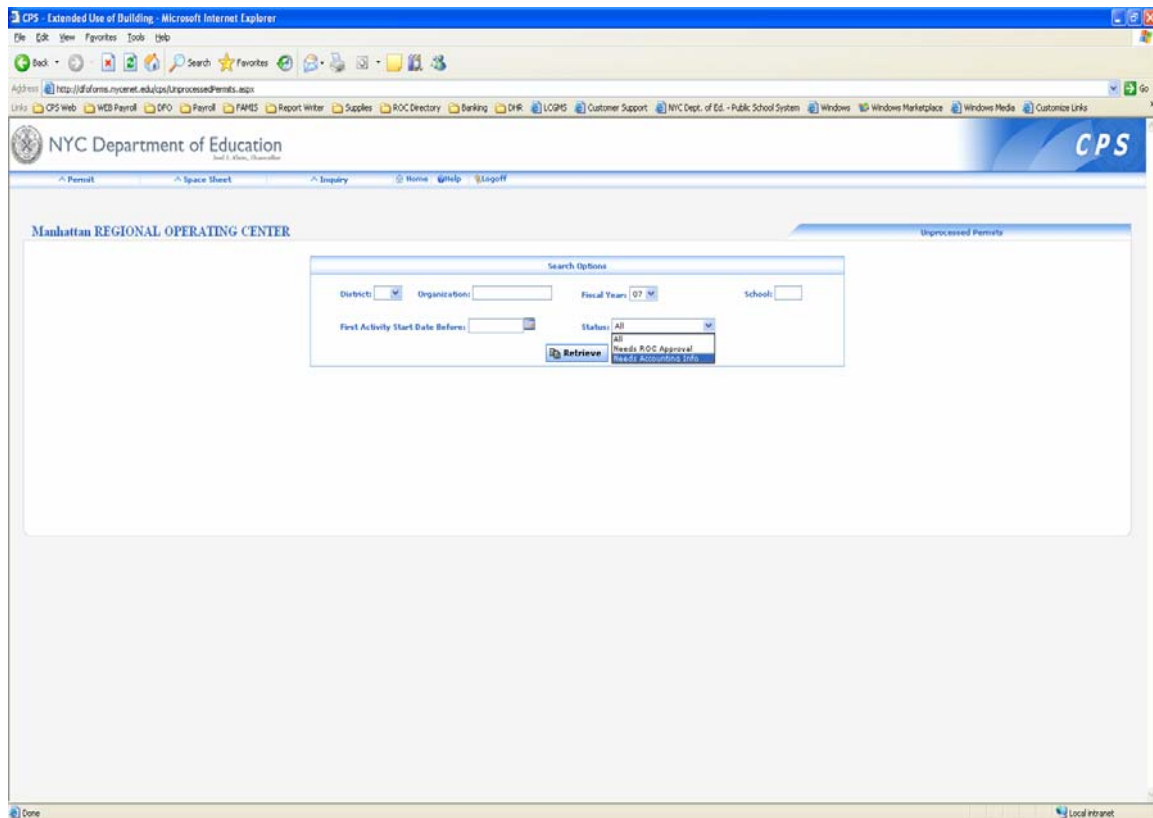
Permits requiring accounting information are those permits that have been approved by the principal but accounting information has not been entered by the ROC. These permits have not been approved by the ROC.

Permits requiring approval are those permits that have been approved by the principal. The accounting information has been entered by the ROC. These permits still require approval from the ROC.

All (Permits requiring accounting information and approval) are those permits that have been approved by the principal. Accounting information has not been entered and approval by the ROC is still pending.

Only permits that have been approved by the principal appear in the ROC unprocessed screen.

The screen shot below of the ROC Unprocessed screen, shows the access of a ROC user with approval access.



A ROC user without approval access will only be able to view in their unprocessed screen all permits that require accounting information. Once the accounting information is entered and submitted, the permit will go to the ROC unprocessed box.

Below is a screen shot of the unprocessed screen for ROC users without approval access.

