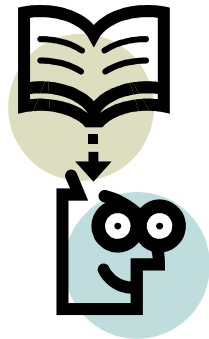


PS 81 Inquiry Teams



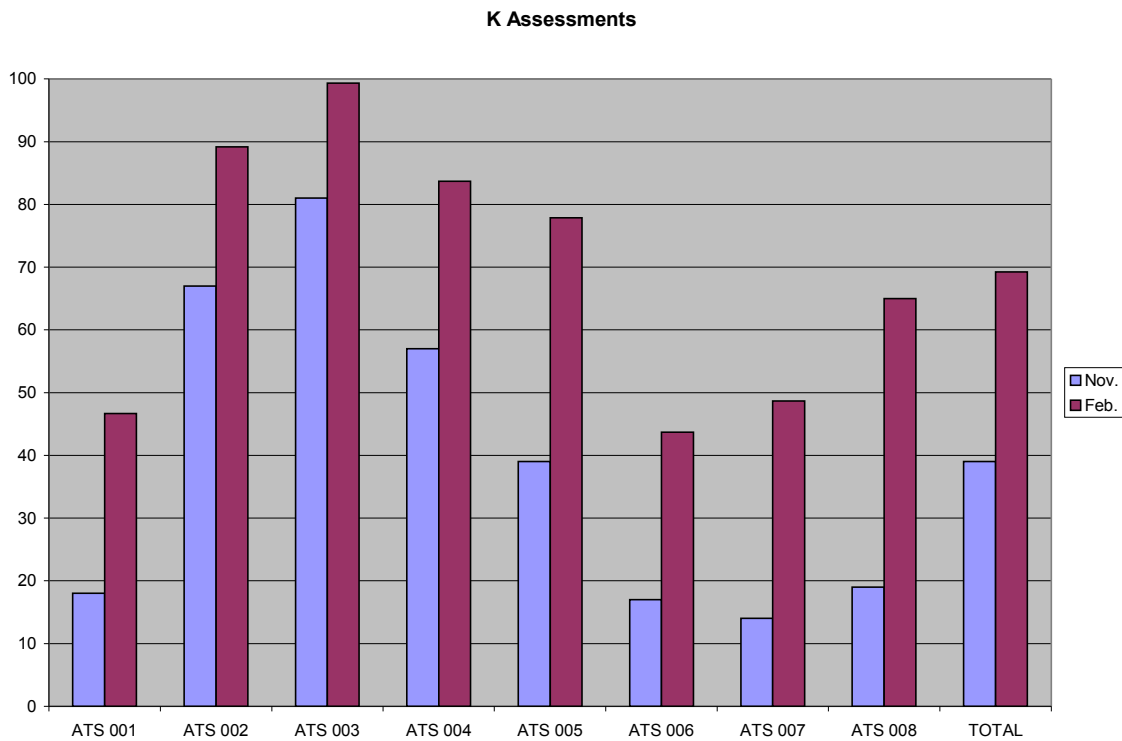
School Inquiry Teams are charged with examining the condition of learning in their grade with the goal of helping the students close the achievement gap. The Inquiry Teams select a Target Population and use the information gathered and experience gained to initiate grade-wide changes to improve student learning.

The Inquiry Teams for 2010/11 school year at P.S.81 Ridgewood Queens, looked at student performance in NYSELA and Acuity scores and selected six students per class whose scores were in the bottom third of the class.

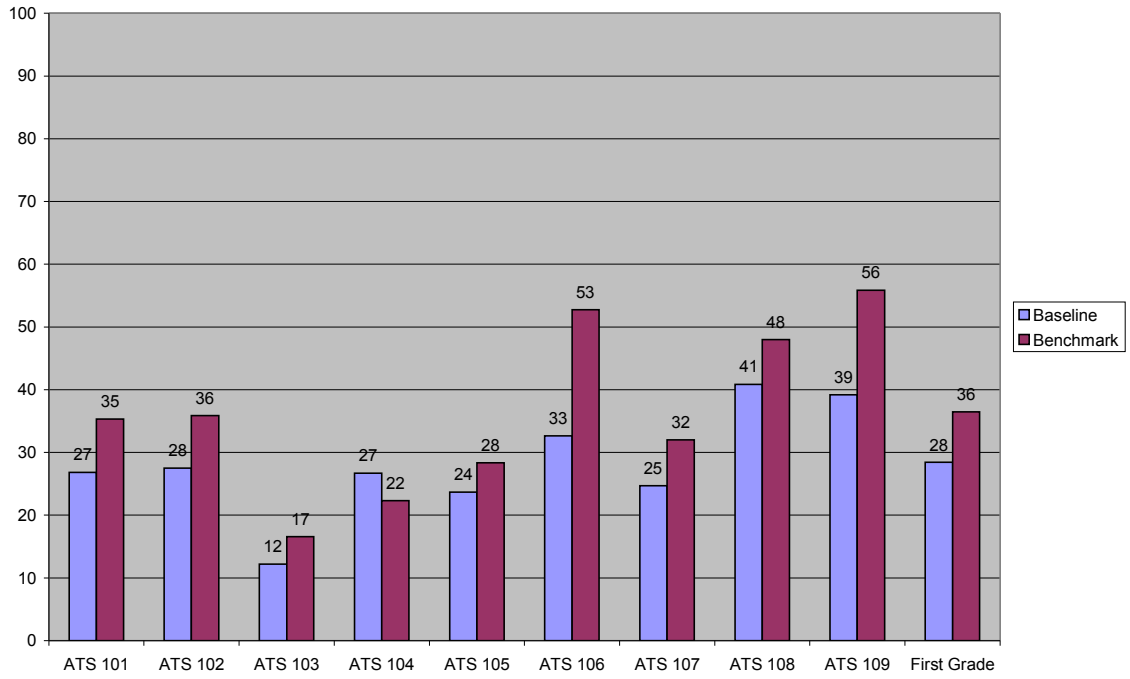
The Inquiry teams are employing traditional as well as innovative teaching methodologies to reach these students. Among the targeted areas of instruction are:

- Phonemic Awareness Skills
- Phonemic Skills
- Comprehension
- Main Idea
- Non-fiction
- Informational Text

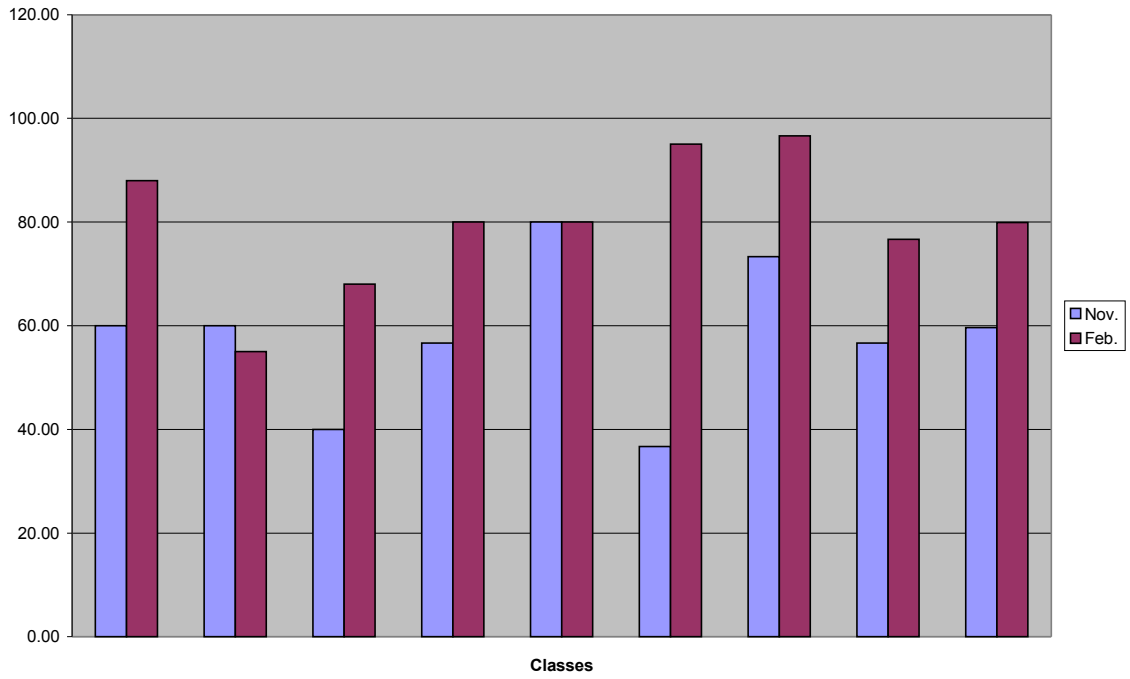
The teachers are conducting constant and ongoing assessments of performance of the students.



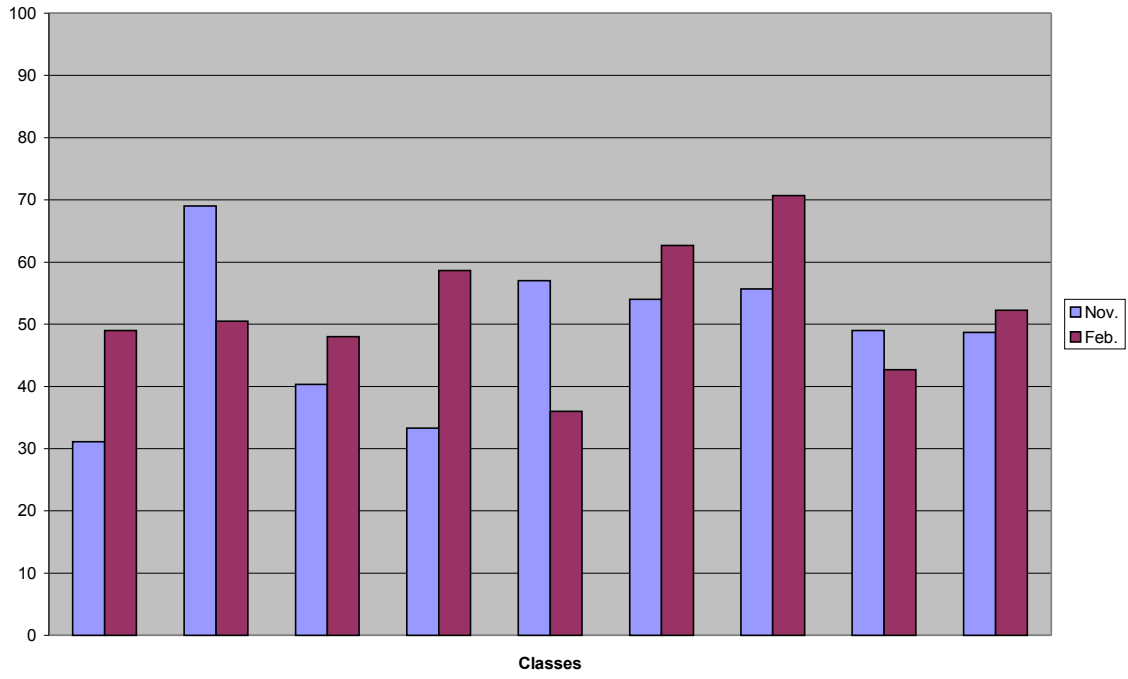
First Grade Assessments



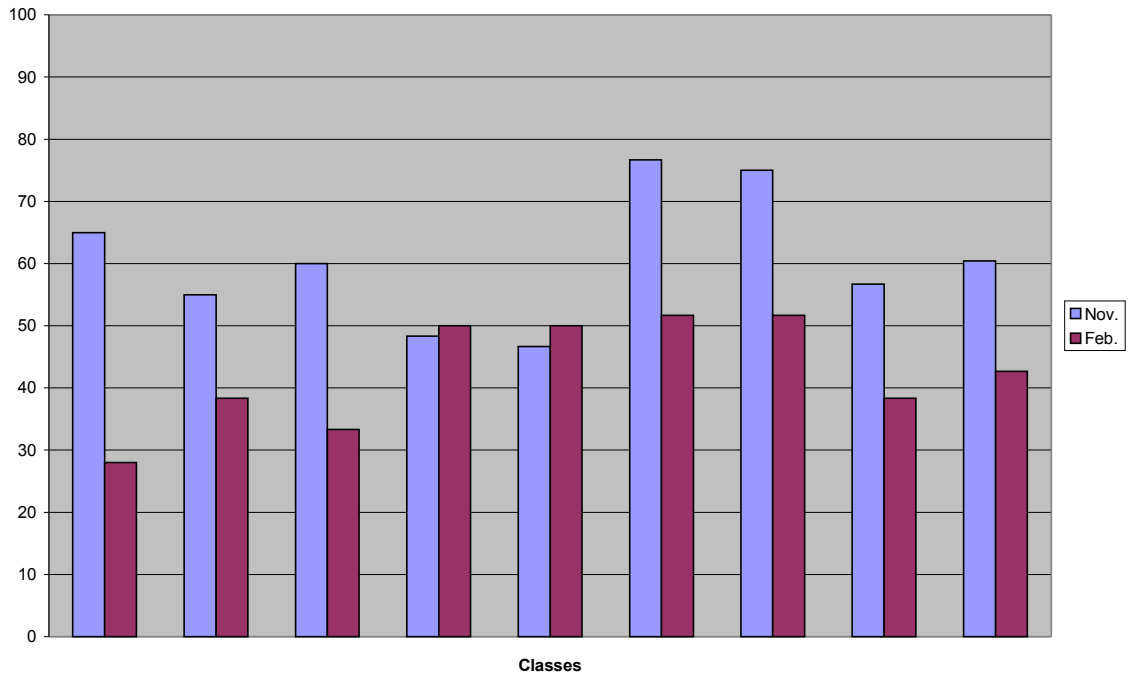
Grade 2 Assessments



Grade 3 Assessments



Grade 4 Assessments



Grade 5 Assessments

