



Department of
Education

**TEST
ADMINISTRATION
HANDBOOK
2009**

**ELEMENTARY - MIDDLE
SCHOOLS**

In an effort to standardize test administration procedures in all New York City elementary and middle schools, the New York City Department of Education Division of Accountability and Achievement Resources (DAAR) developed this “Test Administration Handbook for Elementary and Middle Schools.”

This complete document may be found on the New York City website at:
<http://schools.nyc.gov/Accountability/YearlyTesting/TestAdministration>

This Test Administration Handbook should be distributed and discussed at general faculty conferences, grade conferences, and on staff development days. In addition, a sign-off sheet must be submitted to the Assessment Implementation Director (AID) verifying that all personnel involved in the testing program have reviewed this document prior to administration of standardized exams (Attachment #2).

If you have any questions regarding the information in this document, please contact Grace Pepe, Director of Assessment Operations at:
GPepe2@schools.nyc.gov.

The Test Administration Handbook for Elementary and Middle Schools was prepared by the New York City Department of Education Test Administration Unit. Grace Pepe coordinated the preparation of the handbook. The following staff contributed to the handbook: Marie Busiello, Jose Garcia, Rita Magier, Margaret Reardon, Louise Smith, and Luz Solomita.

Jessica Eadie, Executive Director
Division of Accountability and Achievement Resources

August 2009

TABLE OF CONTENTS

	Page
Procedures for Administering all State and Citywide Tests.....	1
Security Issues and Procedures.....	1
Examinations Not Administered Due to Inclement Weather.....	2
Safeguarding Examination Materials.....	2
Handling Test Materials.....	2
Test Administration Reminders.....	3
Guidelines for Administrators.....	4
Guidelines for Proctors.....	5
Administering Examinations to English Language Learners.....	7
Administering Examinations to Students with Disabilities.....	7
Rating Examination Papers.....	8
Frequently Asked Questions.....	9
Assessment Websites and Phones Numbers.....	13
Assessment Implementation Directors.....	14
Attachment #1: LEP Identification Process.....	15
Attachment #2: Handbook Verification.....	16
Attachment #3: “Testing Do Not Enter” Sign.....	17

PROCEDURES FOR ADMINISTERING ALL STATE AND CITYWIDE TESTS

These procedures apply to all school staff involved in the handling and/or administration of State and City tests, including principals, assistant principals, test coordinators, support staff, and proctors. This document should be photocopied and reviewed by all staff members involved in the administration of State and City tests prior to each test administration. It is the responsibility of the principal to designate a pedagogue or school administrator to be the school test coordinator for all examinations regardless of content area.

SECURITY ISSUES AND PROCEDURES

- Please refer to the appropriate Assessment Memoranda at <http://schools.nyc.gov/Accountability/YearlyTesting/TestAdministration> describing test administration procedures for specific State and City tests.
- In order to maintain the integrity of each test administration, all security procedures, instructions, and schedules must be strictly adhered to without deviation.
- No form of any test may be used for practice or for test preparation unless specifically indicated in the School Administrator's Manual.
- Due to copyright laws and for reasons of test security, you may not make copies or enlargements of any tests.
- No one may take test materials out of schools except to transport them directly from one Department of Education building to another.
- Test results will also be reviewed to ascertain possible security violations. In the event it is determined that a serious security violation has occurred, it may be necessary to declare results invalid.
- Unannounced monitoring inspections will be conducted before, during, and after testing by staff from NYCDOE Central Office and the SED.
- **Suspected security violations must be reported immediately to each of the following:**
 - **school principal;**
 - **Assessment Implementation Director (AID) at the Integrated Service Center (ISC), listed on page 14;**
 - **NYS Education Department (SED) (518) 474-8220 for State assessments; and**
 - **Office of the Special Commissioner of Investigation (SCI) (212) 510-1500.**

EXAMINATIONS NOT ADMINISTERED DUE TO INCLEMENT WEATHER

During State and City examination periods, NYC elementary and middle schools should follow normal testing procedures. If the NYCDOE determines that weather is severe enough to close schools, then New York State and City examinations will not be administered.

SAFEGUARDING EXAMINATION MATERIALS

The principal of each school requesting examinations is responsible for making the necessary arrangements for safeguarding the materials shipped to the school. The shrink wrapped packages containing secure materials must not be opened until the day that each examination is to be administered.

HANDLING TEST MATERIALS

Test materials must be secured in a locked facility when they are first received as well as after the completion of the day's testing. The security of test materials in the school is the responsibility of the principal.

Test Booklets

- On dates specified in the test calendar (contained in specific Assessment Memoranda on test administration), principals or designees may open cartons and inspect the contents to verify that appropriate test levels and quantities have been received. **Do not open shrink-wrapped packages.** Materials have been packaged according to orders submitted by schools. After inspection, cartons must be resealed and securely stored.
- Boxes of materials received at schools that are labeled "DO NOT OPEN UNTIL . . ." must not be opened until the specified date. Monitors may inspect these boxes during unannounced visits to ensure that seals have not been broken before the appropriate date and time.
- Only cartons marked "Non-Secure Materials" may be opened immediately.
- Tests may not be distributed to proctors for administration until the morning of the test at the specified time.
- Each teacher, test coordinator, and principal will be required to sign a "*Test Material Security Form*" indicating the number of test booklets signed for and the number of test booklets returned. This form must be included in the package of answer documents returned to your AID at the ISC by the time and date indicated in the specific test memorandum. A duplicate of this form must be given to the AID at the ISC and a copy kept on file at the school for one year after the end of the current school year.

Test Answer Documents

- Student answer documents will be pre-slugged with students' biographical information. A supply of non pre-slugged answer documents will also be delivered to schools for students who do not have a pre-slugged form.
- All non pre-slugged answer documents delivered to schools will have the school number and a serial number preprinted in the student information field. **These answer documents must be accounted for and returned at the end of the test administration window.**
- Cartons of student answer documents are "Non-Secure Materials" and may be opened immediately.

TEST ADMINISTRATION REMINDERS

Prior to Test Administration

Please ensure that:

- Parents have been notified regarding the test date and time.
- Children have been reminded to bring #2 pencils to class.
- All students who need glasses, hearing aids, etc., have been reminded to bring them for the start of the test.
- Schools have assigned teachers to all classes being tested and assigned an adequate number of hall monitors.
- Rooms have been set aside for latecomers and students who are not being tested.
- Accommodations have been scheduled for ELLs and for students with modifications as stated in their IEP or 504 Plan.
- Teachers have read appropriate test administration procedures, i.e., timing, test modifications, etc.

Room Organization For Test Administration

Please make sure to:

- Keep the door closed.
- Post a sign on the door indicating "TESTING DO NOT ENTER" (Attachment #3). **Do not cover the door window.**
- Open doors with no windows **only** if there will be no distractions from the hallway.
- Administer tests only in rooms where there are no distractions.
- Keep ventilation and lighting in the classroom at a comfortable level.
- Keep students' desks cleared of books, papers, and other non-testing material.
- Seat students so that they cannot look at each other's work.
- Provide optimal testing environments and facilities for all students.

- Cover or remove all bulletin boards, displays, and/or charts that may contain material pertinent to each test. These include, but are not limited to, word walls, spelling/punctuation rules, writing checklists, graphic organizers, multiplication tables, graphs, charts, definitions of terms, key words, calendars, counting numbers, number lines, fractions, weights and measures, and any other item that might pertain to the subject matter being tested.

GUIDELINES FOR ADMINISTRATORS

It is the principal's responsibility to make sure that all secure testing procedures are followed as described in appropriate testing memoranda. Prior to test administration, early start times must be requested in writing to your AID at the ISC.

Principals should distribute this Test Administration Handbook to all staff involved in test administration and make sure of the following:

- All students with test accommodations are scheduled appropriately.
- All bulletin boards/materials that pertain to the test have been covered or removed.
- Students do not use any communication devices while taking an examination, either in the room where the test is being administered or while on a supervised break (such as a bathroom visit).
- All tests have been counted out properly.
- All pre-slugged answer documents are given to the correct teacher.
- At the completion of the test administration, all test answer documents and test booklets are collected from staff members and accounted for.
- Any irregularities concerning test administration are reported immediately to your AID, to SCI at (212) 510-1500, and to the SED at (518) 474-8220 for State examinations. Call irregularities in to the appropriate offices and follow up with a letter, signed by the principal, or send an email.
- Refrain from using the PA system during testing.
- After the completion of the test administration, every test booklet has been accounted for, placed in a carton, and put in a secure, locked facility.
- Teachers and principals have signed the "*Test Material Security Form*" which can be found on appropriate Assessment Memoranda located on <http://schools.nyc.gov/Accountability/YearlyTesting/TestAdministration>
- The "*Test Material Security Form*" and the packing slip have been included with the answer documents that are to be delivered to your designated ISC site. A duplicate of this form must be given to the AID at the ISC and a copy kept on file at the school for one year after the end of the current school year.

GUIDELINES FOR PROCTORS

Active proctoring must take place at all times.

Before the Test

- Be prepared to implement test modifications as indicated on a student's IEP or 504 Plan.
- All students who need glasses, hearing aids, etc., must have them before starting the test.
- Each student receives his/her correct pre-slugged answer document.
- All announcements are made before the beginning of the test.
- **Student Use of Communication Devices**
At the beginning of each examination, proctors must read the following to all students:

You may not use any communication device while taking a State examination, either in the room where the test is being administered or while on a supervised break (such as a bathroom visit). Such devices include, but are not limited to, cellular telephones, CD and audiocassette players, radios, MP3 players, Personal Digital Assistants, video devices and associated headphones, headsets, microphones, or earplugs.

If your cell phone rings or vibrates, you may not answer it. If your pager beeps or vibrates, you may not look at it. You must therefore turn these or other devices OFF right now and secure them under your desk (or in the location specified by the principal). Your examination will be invalidated and no score will be calculated for you if you use any such device or related communications technology or if you wear headphones while in the testing room.

During the Test

- Read all directions verbatim. Do not paraphrase directions unless indicated on a student's IEP or 504 Plan.
- The entire test (except ELA), including directions, may be orally translated into another language if the student is an English Language Learner (ELL) and there is no translated version of the test available.
- Answer only student questions that pertain to the directions. Read only the portion of the directions that is addressed by the student's question. Do not interpret the directions for your students.
- Do not give help on specific questions. Do not give clues that indicate an answer. Do not help to eliminate answer choices. Do not tell a student to review an answer.
- Adhere to all time limits. Make sure beginning, remaining, and ending times are displayed in a location where all students can see them.
- Read listening passages at a moderate, steady pace, and the specified number of times.

- Students may use highlighters only if they are used for instruction during the regular school year.
- Any irregularity during test administration must be immediately reported to the hall monitor.
- **Student Cheating:** Do not permit students to obtain information from or give information to other students in any way during the test. If you suspect that such an attempt has occurred, warn the students that any further attempts will result in the termination of their tests. If necessary, move the students to another location. If these steps fail to end attempts to obtain or give information, notify the principal immediately. At the conclusion of the test, all suspected cheating must be reported to the principal. If, in the judgment of the principal, a student has given or received information during the test, the principal must follow the school's disciplinary procedure for student cheating and invalidate the student's test. In addition, the principal must report the incident via letter or email to the AID at the ISC and to the SED. Invalidated tests may not be scored.

Fraud

No one, under any circumstances, including the student, may alter the student's responses on the test once the student has handed in his or her test materials. Teachers and administrators who engage in inappropriate conduct with respect to administering and scoring State examinations may be subject to disciplinary actions in accordance with Sections 3020 and 3020-a of Education Law or to action against their certification pursuant to Part 83 of the Regulations of the Commissioner of Education.

After the Test

- Collect all answer documents and test materials.
- Make sure you sign the "*Test Material Security Form*" when you return the test booklets. If the number of booklets returned is not equal to the number signed for when received, notify the principal immediately.
- Report all unusual circumstances to your principal, such as defective test booklets, problematic answer documents, students getting sick, etc.
- Report all perceived test administration irregularities to the principal.
- All used and unused test materials (unless specified in a testing memorandum) will be collected at the end of the school year.

ADMINISTERING EXAMINATIONS TO ENGLISH LANGUAGE LEARNERS

Schools may provide the following testing accommodations to ELLs as long as these accommodations are used consistently throughout the school year:

- Time Extension: time and a half
- Separate location
- Bilingual Dictionaries and Glossaries for all Regents except Languages other than English
- Third Reading of Listening Selection on New York State English Language Arts Examination
- Simultaneous use of English and Alternative Language Editions for New York State content area examinations, e.g., Mathematics
- Oral Translations for Lower-Incidence Languages except for English
- Writing Response in a Native Language when using an Alternate Language Exam or Oral Translation

LAB-R

LAB-R Form B is administered only once within the first ten days of initial enrollment.

Beginning in 2008, schools are permitted to provide LEP/ELL testing accommodations on NYS assessments to former LEP/ELLs for up to two years after testing proficient level on the NYSESLAT.

ADMINISTERING EXAMINATIONS TO STUDENTS WITH DISABILITIES

Students Who Incur Disabilities Shortly Before Test Administration

School Principals may modify testing procedures for General Education students who incur an injury or the onset of a short- or long-term disability sustained or diagnosed within 30 days prior to the administration of the State examinations. Principals may authorize certain accommodations that will not significantly change the construct of the test.

These accommodations are limited to:

- Extending the time limit
- Administering the test in a special location
- Recording the student's answers in any manner
- Reading the test to the student (This accommodation is only allowed for students with impaired vision. Those tests or parts of tests that measure reading comprehension may not be read to the student.)

Students Whose IEP or 504 Plan Includes Testing Accommodations

Principals must ensure that students with disabilities are provided with those testing accommodations included in their IEP, 504 Plan, or declassification IEP that are permissible on State examinations.

RATING EXAMINATION PAPERS

The principal is responsible for establishing rating procedures that will ensure reasonable confidence in the accuracy of the scores assigned to the answer papers by individual teachers or by committees of teachers. The principal is responsible for the rating of all answer papers written in the school, including papers written by persons admitted to examinations in subjects not regularly taught in the school, papers written by persons not in the school, papers written by students taking the alternative language editions of examinations, and papers written in Braille.

To maintain uniform rating standards, all teachers involved in rating State examinations must be thoroughly familiar with the rating instructions provided by the SED. Accompanying each examination is a scoring key with directions for rating the multiple-choice and short answer questions and, if applicable, guidelines for rating the essay portions of the examination. Teachers must rate strictly according to the scoring key provided by the SED. Credit may be allowed for other answers only if they are clearly equivalent to the key answer. Permission must be obtained from the Office of State assessment before students can be given credit for any answer that is not clearly equivalent to the key answer. Credit may **not** be given for answers that the teacher considers merely plausible, possible, or reasonable.

The Finality of Examination Scores

When the teacher scoring committee completes the scoring process, test scores must be considered final and must be entered onto students' answer documents. Principals and other administrative staff in a school or district do not have the authority to set aside the scores arrived at by the teacher scoring committee and rescore student examination papers or to change any scores assigned through the procedures described in this manual and in the scoring materials provided by the department. Any principal or administrator found to have done so, except in the specific circumstances cited in the School Administrator's Manual, will be in violation of SED policy regarding the scoring of State examinations.

Test Shipment Tracking

All test shipments will be delivered by UPS and may be delivered at any time between the hours of 8 a.m. and 5 p.m. Schools that do not receive their shipment of secure test materials by 4 p.m. on the day before the test should track the shipment of test materials to them from the SED on the Internet.

Go to: <http://www.ups.com/tracking/tracking.html>. Click the Reference Number tab. In the Reference Number field, type the 12-digit BEDS code of the school where you have asked that the tests be shipped. If you are unable to track your shipment or notice some other irregularity, contact the Office of State Assessment via fax at 518-474-2021.

FREQUENTLY ASKED QUESTIONS

Q. WHAT TYPES OF PRACTICE MATERIALS MAY I USE?

- A.** While we feel that good instruction is sufficient to prepare students for their assessment, any materials that are used should be aligned with the New York State Standards.

Please note:

- Selections of authentic literature that are taught in class may appear on a standardized test; however, exam questions relating to the passage will most likely differ from what is covered in class.

Q. WHAT DO I DO IF I AM MISSING OR SHORT TEST MATERIALS?

- A.** Call your AID at your ISC to advise you where additional testing materials may be obtained

Q. MAY A PARAPROFESSIONAL BE ASSIGNED AS THE ONLY CLASSROOM PROCTOR?

- A.** Only a licensed pedagogue may be used as a classroom proctor.

Q. MAY A SUBSTITUTE TEACHER BE ASSIGNED AS THE ONLY PROCTOR?

- A.** Substitute teachers **may** be assigned as the main classroom proctor, only if they have been properly instructed in testing procedures and familiar with teacher's directions.

Q. IS IT NECESSARY TO ASSIGN HALL MONITORS?

- A.** Yes. Staff must be assigned as hall monitors in case of emergencies.

Q. MAY I REMOVE DISRUPTIVE STUDENTS FROM MY CLASS BEFORE THE EXAM BEGINS?

- A.** A student may not be removed from the class before testing begins unless the student has an IEP or 504 Plan, which indicates such a test accommodation.

Q. WHAT HAPPENS WHEN A STUDENT IS DISRUPTIVE AND IS REMOVED FROM THE CLASSROOM?

A. Have the student complete his/her exam in another location, making note of the remaining time for test administration. The following procedure must be done:

- A hall monitor should be available to remove the student in case the student becomes disruptive.
- Speak to an administrator if any further action is needed.
- Notify the parent.

Q. WHAT HAPPENS WHEN A STUDENT IS NOT BEING DISRUPTIVE BUT REFUSES TO TAKE AN EXAM?

A. The principal must be notified. The principal will then decide if removal from the classroom is necessary. If the student is removed, he or she may be given the remaining time to complete the exam. **For The LAB-R and NYSESLAT only**, the student may complete the exam at a later date during the test administration window.

Q. WHAT HAPPENS WHEN A STUDENT HAS STARTED THE EXAM AND REFUSES TO COMPLETE THE EXAM, OR BECOMES ILL AND CANNOT COMPLETE THE EXAM?

A. Notify the principal. Do not permit any student to leave and then return to the examination room during any session of the exam unless accompanied by a proctor or hall monitor. The proctor must take note of the time of onset of illness and the time remaining. If possible, the student may be placed in another location and be given the remaining time to complete the exam. **For The LAB-R and NYSESLAT only**, the student may complete the exam at a later date during the test administration window.

Q. WHAT DO I DO WHEN A STUDENT HAS TO GO TO THE BATHROOM AFTER THE TEST STARTS?

A. A hall monitor is required. The classroom proctor should:

- Record the amount of time the student spent out of the room if it is a timed test.
- Have the hall monitor accompany the student to bathroom.
- Allow the student to complete the exam after he/she returns, taking into account the amount of time the student was out of the room.
- It is the proctor's responsibility to make sure all other students keep test booklets closed and that the class is silent while the student is finishing the exam.
- Have the class wait for the student to complete the test, then collect all test booklets and answer documents. (An alternative to this is to have the student escorted to another location to complete the exam with a proctor.)

- Q. WHAT DO I DO IF A STUDENT RAISES HIS/HER HAND DURING THE EXAM AND SAYS, “I DON’T UNDERSTAND THIS”?**
- A.** First, the proctor must determine if the student’s question pertains to the directions or to a specific test question. **At no time does a proctor assist a student with a specific test question.** In the rare circumstance that a student does not understand the directions, the proctor should ask, “What don’t you understand about the directions?” The proctor should read only the specific directions to the student. The proctor should not paraphrase or interpret the directions for the student.
- Q. WHAT IS ACTIVE PROCTORING?**
- A.** Active proctoring is defined as a proctor circulating around the room, making sure students are working independently.
- Q. MAY PROCTORS CIRCULATE AROUND THE ROOM WITH A PEN/PENCIL AND/OR A TEST BOOKLET IN THEIR HANDS?**
- A.** No. Pens and pencils are to be left on the teacher’s desk. Proctors may hold a test booklet while reading the directions but should then place it on the teacher’s desk. Proctors **should not** be reading the booklet during the test administration time.
- Q. WHAT IF A PROCTOR SEES THAT A STUDENT SKIPPED AN ANSWER OR IS ANSWERING IN THE WRONG COLUMN?**
- A.** At no time does the proctor correct an individual student’s work. If the proctor notices that a student has skipped an answer, he/she should make a note of the skipped question number and notify the principal after the test is completed. The proctor should make a class announcement telling all students to check their score documents to make sure that only one answer appears on each line and that no lines have been skipped.
- Q. SHOULD ANY ANNOUNCEMENTS BE MADE OVER THE PA SYSTEM?**
- A.** It is not recommended. Schools should refrain from using the PA system unless there is a school-wide emergency.
- Q. MAY PROCTORS USE ELECTRONIC EQUIPMENT SUCH AS CELL PHONES DURING AN EXAM?**
- A.** No. Cell phones or beepers must be turned off during an exam. Proctors may not play music for the students or talk in the hallway to other staff members or visitors.

Q. MAY STUDENTS USE SCRAP PAPER WHILE TAKING EXAMS?

A. Directions for use of scrap paper are indicated in Teacher Directions for specific tests.

Q. IF STUDENTS COMPLETE AN EXAM EARLY, MAY THEY TAKE OUT A BOOK TO READ?

A. No. This may be distracting for the other students.

Q. MAY STUDENTS WITH EXTENDED TIME MODIFICATIONS RETURN TO THEIR CLASSROOM IF THEY FINISH THE EXAM BEFORE THE TIME EXTENSION IS REACHED?

A. No. If other students are taking the exam in a special location and are still working on the test, it may be disruptive to allow a student to leave the room. A student may leave only for an emergency.

ASSESSMENT WEBSITES

NYS DEPARTMENT OF EDUCATION:
OFFICE OF STATE ASSESSMENT
<http://emsc33.nysed.gov/osa/>

nySTART: NYS TESTING AND ACCOUNTABILITY REPORTING TOOL:
www.nystart.gov

NYS DEPARTMENT OF EDUCATION:
ASSESSMENT INFORMATION
<http://www.emsc.nysed.gov/3-8/>

NYC DIVISION OF ACCOUNTABILITY AND ACHIEVEMENT RESOURCES:
<http://schools.nyc.gov/Accountability/YearlyTesting/TestAdministration>

ASSESSMENT PHONE NUMBERS

NYS DEPARTMENT OF EDUCATION:
OFFICE OF STATE ASSESSMENT
(518) 474-8220

NYC OFFICE OF ACCOUNTABILITY HELP DESK:
(212) 374-3990

NYC ASSESSMENT AND TEST ADMINISTRATION:
(718) 349-5600

OFFICE OF THE SPECIAL COMMISSIONER OF INVESTIGATION (SCI)
(212) 510-1500

INTEGRATED SERVICE CENTER (ISC) ASSESSMENT IMPLEMENTATION DIRECTORS (AIDS):

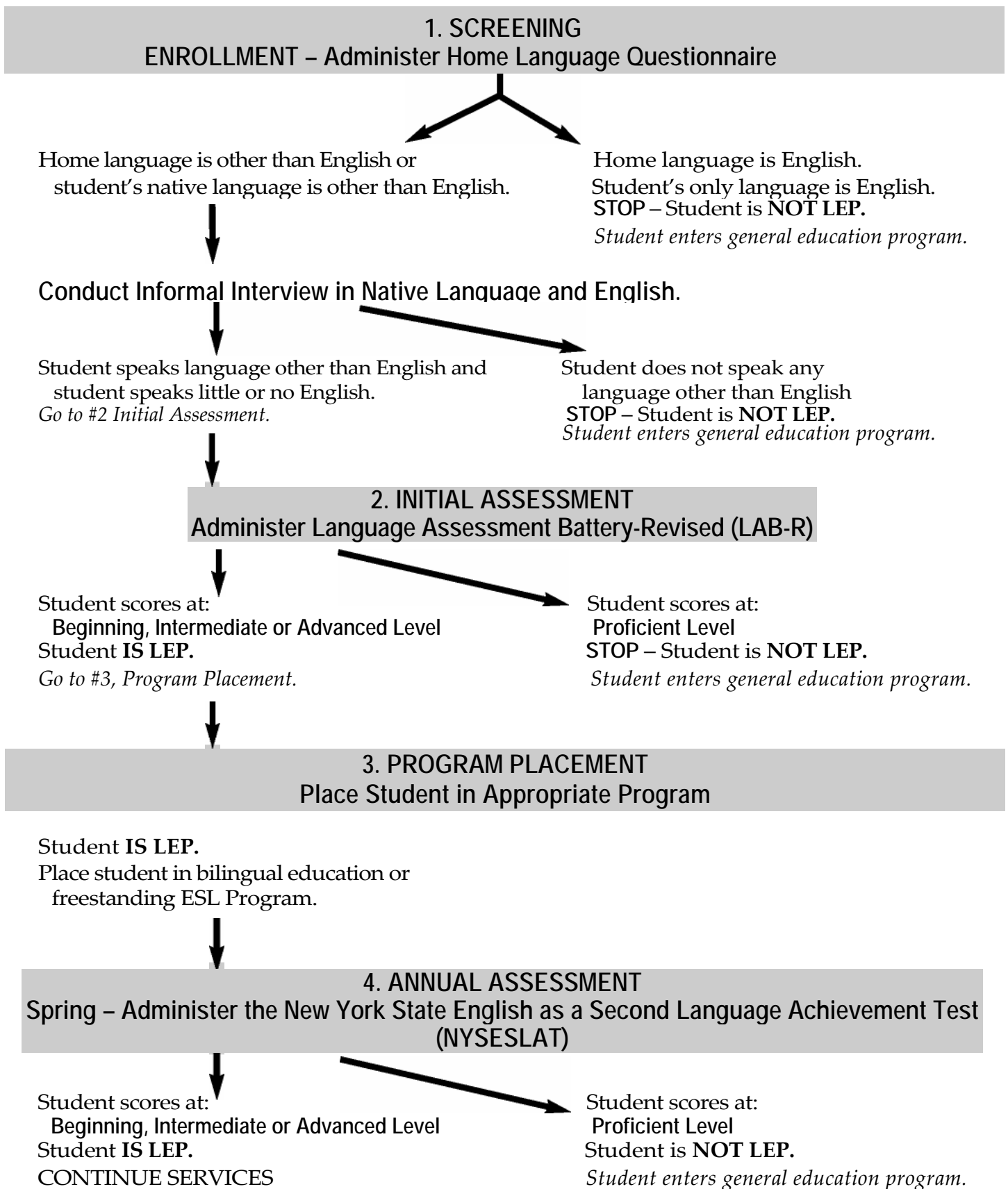
MANHATTAN -Districts: 1, 2, 3, 4, 5, & 6; (212) 356-3784
BRONX -Districts: 7, 8, 9, 10, 11, & 12; (718) 741-5559
BROOKLYN -Districts: 13, 14, 15, 16, 19, 23 & 32; (718) 935-5965
QUEENS -Districts: 24, 25, 26, 27, 28, 29, & 30; (718) 391-8352
STATEN ISLAND -Districts: 17, 18, 20, 21, 22, & 31; (718) 390-1579

SPECIAL EDUCATION -District 75; (212) 802-1521
ALTERNATIVE SCHOOLS AND PROGRAMS -District 79; (718) 557-2677
CHARTER SCHOOLS -District 84; (212) 374-5550
HOMEBOUND INSTRUCTION; (718) 794-7241
HOSPITAL INSTRUCTION; (718) 794-7266

NEW YORK CITY DEPARTMENT OF EDUCATION
DIVISION OF ACCOUNTABILITY
AND ACHIEVEMENT RESOURCES
2009-2010 ASSESSMENT IMPLEMENTATION DIRECTORS

INTEGRATED SERVICE CENTER	ASSESSMENT IMPLEMENTATION DIRECTORS
MANHATTAN	
COMPRISING DISTRICTS:	
1, 2, 3, 4, 5, & 6	
333 Seventh Avenue	Marie Busiello, IA
7 th Floor	212-356-3784
New York NY 10001	212-356-7523 (FAX)
	MBusiel@schools.nyc.gov
BRONX	
COMPRISING DISTRICTS:	
7, 8, 9, 10, 11, & 12	
1 Fordham Plaza	Sharon Cahr
7 th Floor	718-741-5559
Bronx NY 10458	718-741-7954 (FAX)
	SCahr@schools.nyc.gov
BROOKLYN	
COMPRISING DISTRICTS:	
13, 14, 15, 16, 19, 23 & 32	
131 Livingston Street	David Rapheal
6 th Floor	718-935-5965
Brooklyn NY 11201	718-935-4888 (FAX)
	DRaphea@schools.nyc.gov
QUEENS	
COMPRISING DISTRICTS:	
24, 25, 26, 27, 28, 29, & 30	
28-11 Queens Plaza North	Barbara Marcisak
2 nd Floor, Room #43	718-391-8352
Long Island City NY 11101	718-391-6088 (FAX)
	BMarcis@schools.nyc.gov
STATEN ISLAND	
COMPRISING DISTRICTS:	
17, 18, 20, 21, 22, & 31	
715 Ocean Terrace	Judy Cohen
Building A, Room #A127	718-390-1579
Staten Island NY 10301	718-420-5665 (FAX)
	JCohen32@schools.nyc.gov

New York State – LEP Identification Process





Joel L Klein, *Chancellor*

**DIVISION OF ACCOUNTABILITY AND ACHIEVEMENT RESOURCES - Scan Center
44-36 Vernon Blvd., 2nd Floor – Long Island City, NY 11101**

Borough_____ District_____ School_____

I, _____, Principal of PS/MS_____,

verify that all personnel involved in the testing program have reviewed the Test Administration Handbook prior to the administration of standardized exams.

Attached, please find a signature roster of all personnel.

Print Name

Signature

Date

*Fax this form to your AID at the ISC.
Attachment #2

TESTING

DO NOT

ENTER