



2005-06 ANNUAL SCHOOL REPORT SUPPLEMENT

Region 08

P.S. 282

PS 282 PARK SLOPE

New York City Public Schools
Joel I. Klein, Chancellor

Grade Levels:

Students on Oct. 31, 2005: 565

Students on May 1, 2006:

School Mission Statement

Public School 282's mission is to prepare students to become productive, compassionate and valuable members of our multicultural society. We seek to develop in our students a life-long love for learning and to foster and enhance their creativity. We will continue to have all students performing at or above grade level in all subject areas by providing a supportive staff and an environment conducive to learning.

Principal's Statement

We provide a stimulating environment that challenges all students' interests in every aspect of the curriculum. As a multicultural school, we encourage awareness, understanding, and respect for diversity. We have a vibrant learning community where students are provided with various programs that enhance their creative, artistic and academic abilities. We have strong community partnerships with several organizations such as: Spoons Across America, Carnegie LinkUp!, Brooklyn Conservatory of Music, Brooklyn Center for Urban Education, Banking On Our Future, Brooklyn District Attorney's Office, PEN Readers and Writers Project.

Special Academic Programs

A gifted program class on each grade level(PK-5); Instrumental Music; Culinary Arts, Visual and Performing Arts Program; Piano and Fencing; Lego Robotics, Chess and many more.

Extracurricular Activities

Glee Clubs, Violin, Student Council and Remedial/Enrichment Programs. TLC After School provides keyboard instruction and karate instruction.

Community Support

Arts Connection, B'klyn D. A. (Legal Lives), Ballet Tech., NYU, LIU, Pratt Inst., B'klyn Int'l School, Xavier H.S., Banking On Our Future, Astoria Savings Bank, Brooklyn Botanic Garden, Brooklyn Museum of Art, Chess-in-the-Schools, New York Cares, and Carnegie Link-Up Music Program.

Parent/School Support

Our parents are an integral part of our school community. They provide tutoring for our students, assist in the school cafeteria and with morning line-up, attend parent orientation sessions, open school conferences and monthly PTA meetings, assist in class excursions, conduct school tours and provide overall support in school functions.

2006-07 School Accountability Status:

In Good Standing

This school received Title I Funding in:

2004-05: NO; 2005-06: NO; 2006-07: NO

The Division of Assessment and Accountability (DAA) compiled this report primarily from central databases and information provided by this school's principal. Throughout the report, N/A indicates that information was not available or did not apply to this school. The 2005-2006 Annual School Report is a supplement to the New York State Education Department's School Report Card for New York City Schools. Consult the Parent Guide for an explanation of the data in this report. Other DAA reports can be obtained online at www.nyc.gov/daa.

STUDENTS

Involved In Police Department Incidents

The total enrollment in this consolidated location is 565 students. Please keep this number in mind as you review the numbers of incidents.

	This school	Consolidated Locations	Similar Size schools
Major Crimes			
Property Crimes	0		0.4
Crimes Against Persons	0		0.1
Other Crimes	0		1.7
Non- Criminal	1		2.9

Similar-Size Schools include all schools and consolidated locations with enrollments of 501-750 students.

<http://schools.nyc.gov/ourschools/schoolsafety.htm>

Recent Immigrants*

Percent of enrollment	2004	2005	2006
This school	4.9	4.0	2.5
Similar schools	10.3	8.8	6.2
City schools	9.2	8.4	6.5

* Students enrolled as of Oct. 31, 2005 who immigrated to the U.S. within the last three years.

Recent Immigrants' Place of Birth

Percent of students	2006
DENMARK	0.4
GERMANY	0.4
UNITED KINGDOM (BRITAIN)	0.4

Profile of Entering Ninth and Tenth Graders*

Characteristics	This School	Similar Schools	City Schools
	Percent	Percent	Percent
Gender Male	N/A	N/A	N/A
Gender Female	N/A	N/A	N/A
Part-time Special Education	N/A	N/A	N/A
Full-time Special Education	N/A	N/A	N/A
ELL	N/A	N/A	N/A
Over-age for grade	N/A	N/A	N/A
Percent eligible for free lunch	N/A	N/A	N/A
Avg. daily attend. during prior sem.	N/A	N/A	N/A
Percent meeting standard in:			
ELA (tested only)	N/A	N/A	N/A
Mathematics (tested only)	N/A	N/A	N/A

* This information is for the students who were on register as new 9th and 10th graders on October 31, 2005 and came from another school.

* Not applicable to elementary and middle schools

Admission to Other Schools in September 2005

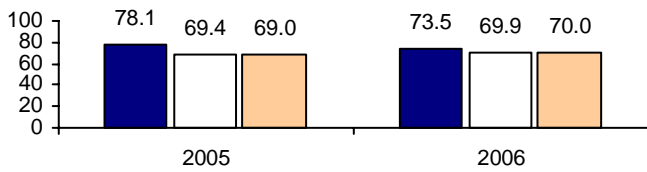
School Name	Boro	District	School Number	Leavers*	
				Number	Percent
MS 266 PARK PLACE COMMUN K		13	266	45	32.6
JHS 113/OLD 294 EDMONDS C K		13	113	18	13.0
JHS 051 WILLIAM ALEXANDER K		15	051	12	8.7

* Leavers are students who left their school for any reason.

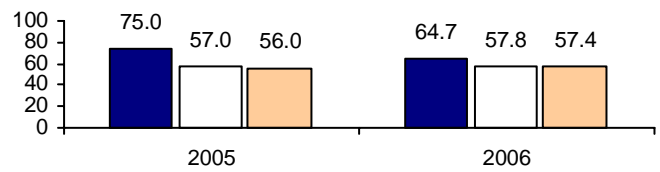
SCHOOL CHARACTERISTICS

TEACHERS

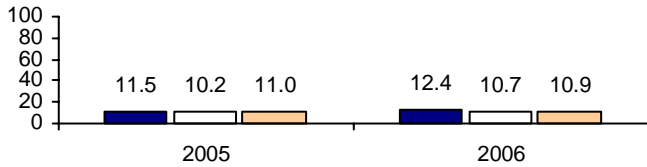
Percent More Than Two Years Teaching in This School



Percent More Than Five Years Teaching Anywhere



Average Days Absent



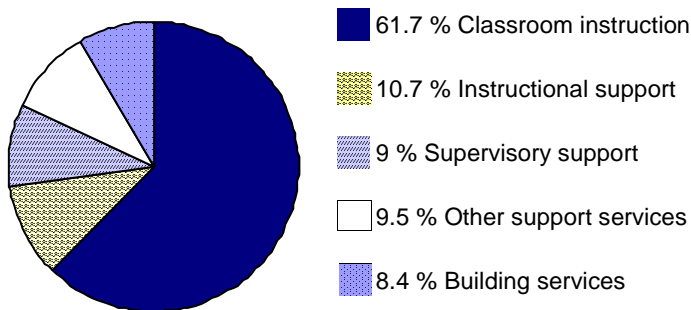
SCHOOL EXPENDITURES

Average Spending Per Student (Direct Services Only)

	2004	2005	2006
This school	\$11,096	\$10,871	N/A
Similar schools	\$10,848	\$11,708	N/A
City schools	\$11,608	\$12,511	N/A

Note: The state calculation of school expenditures per student for direct and indirect services in 2004 was \$12,896 for all New York City schools. An average of \$13,085 was calculated for all New York State schools including those in New York City.

How money was spent in this school in 2005 (Direct Services Only)



0.7% is used for District Support.

OTHER SCHOOL INFORMATION

School Capacity

Percent of utilization*	2004	2005	2006
This school	63.9	53.2	50.4
Similar schools	90.2	87.6	87.5
City schools	87.1	84.8	82.8

*When over 100%, school has exceeded official capacity.