



2005-06 ANNUAL SCHOOL REPORT SUPPLEMENT

Region 04

P.S. 11

PS 011 KATHRYN PHELAN

New York City Public Schools
Joel I. Klein, Chancellor

Grade Levels:

Students on Oct. 31, 2005: 1,199

Students on May 1, 2006:

School Mission Statement

The mission of P.S. 11 Queens is to provide all of our youngsters with a world class education. In our culturally diverse, child-centered school, we will promote a safe, nurturing and exciting learning environment. Our commitment to excellence will be accomplished through the collaborative efforts of involved parents, a supportive community, and a dedicated, caring staff.

Principal's Statement

P.S. 11 is an exciting, dynamic, and nurturing school with a large and diverse student population. We provide an interdisciplinary approach to teaching, integrating the arts and technology in all curriculum areas. We have a Foreign Language Heritage Program in English and Spanish for youngsters in K through grade 6. P.S. 11 has two computer labs and modern technology in the classrooms. In addition, Smart Boards are integrated into the curriculum by trained teachers on all grades to further enhance instruction and technology use. We are truly dedicated to meet the individual needs of all children.

Special Academic Programs

We offer Foreign Language Heritage Program, peer tutoring, internet telecommunications, Project Arts, ESL and Spanish classes, ESL after-school program, Wilson and Foundations reading programs.

Extracurricular Activities

During the school year, this school's non-academic activities include: Glee and Leaders Clubs, Boy Scouts, Chess Club, an after-school OST program, and Student Organization.

Community Support

We have partnerships with Queens Council on Arts, City Lore, Arts Connection, Woodside on the Move and Woodside Kiwanis. In addition, we have partnerships with the following colleges/universities: Brown, St. John's and Fordham, Hunter, LaGuardia Community, and Queens.

Parent/School Support

There is extensive parent/school collaboration at P.S. 11. Parents are actively involved on the school leadership team. They serve as classroom volunteers, assist with health screening, security, holiday fair, and field trips. Classes are provided for parents in ESL, computer and other areas by teachers, specialists and the Parent Coordinator.

2006-07 School Accountability Status:

In Good Standing

This school received Title I Funding in:

2004-05: YES; 2005-06: YES; 2006-07: YES

The Division of Assessment and Accountability (DAA) compiled this report primarily from central databases and information provided by this school's principal. Throughout the report, N/A indicates that information was not available or did not apply to this school. The 2005-2006 Annual School Report is a supplement to the New York State Education Department's School Report Card for New York City Schools. Consult the Parent Guide for an explanation of the data in this report. Other DAA reports can be obtained online at www.nyc.gov/daa.

STUDENTS

Involved In Police Department Incidents

The total enrollment in this consolidated location is 1199 students. Please keep this number in mind as you review the numbers of incidents.

This school	Consolidated Locations	Similar Size schools
-------------	------------------------	----------------------

Major Crimes

Property Crimes	0	0.7
Crimes Against Persons	0	0.5
Other Crimes	1	4.9
Non- Criminal	0	7.0

Similar-Size Schools include all schools and consolidated locations with enrollments of 1001-1250 students.

<http://schools.nyc.gov/ourschools/schoolsafety.htm>

Recent Immigrants*

Percent of enrollment	2004	2005	2006
This school	17.9	16.6	11.4
Similar schools	11.9	10.8	7.8
City schools	9.2	8.4	6.5

* Students enrolled as of Oct. 31, 2005 who immigrated to the U.S. within the last three years.

Recent Immigrants' Place of Birth

Percent of students	2006
BANGLADESH	2
ECUADOR	1.3
MEXICO	1.3

Profile of Entering Ninth and Tenth Graders*

Characteristics	This School	Similar Schools	City Schools
	Percent	Percent	Percent
Gender Male	N/A	N/A	N/A
Gender Female	N/A	N/A	N/A
Part-time Special Education	N/A	N/A	N/A
Full-time Special Education	N/A	N/A	N/A
ELL	N/A	N/A	N/A
Over-age for grade	N/A	N/A	N/A
Percent eligible for free lunch	N/A	N/A	N/A
Avg. daily attend. during prior sem.	N/A	N/A	N/A
Percent meeting standard in:			
ELA (tested only)	N/A	N/A	N/A
Mathematics (tested only)	N/A	N/A	N/A

* This information is for the students who were on register as new 9th and 10th graders on October 31, 2005 and came from another school.

* Not applicable to elementary and middle schools

Admission to Other Schools in September 2005

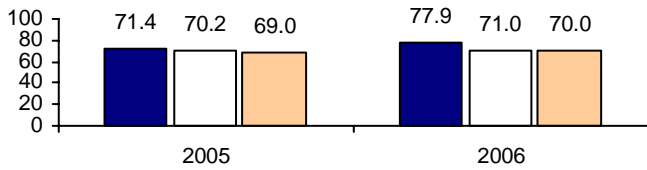
School Name	Boro	District	School Number	Leavers*	
				Number	Percent
IS 125 THOM J MCCANN WOO	Q	24	125	117	56.5
ROBERT F.WAGNER JR. SEC	Q	24	560	11	5.3
PS 150 QUEENS	Q	30	150	6	2.9

* Leavers are students who left their school for any reason.

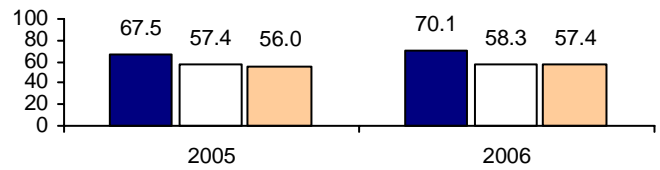
SCHOOL CHARACTERISTICS

TEACHERS

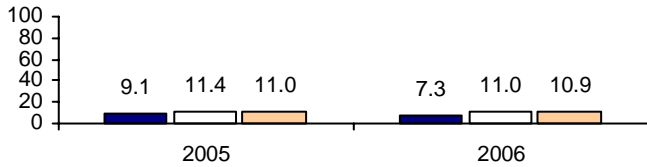
Percent More Than Two Years Teaching in This School



Percent More Than Five Years Teaching Anywhere



Average Days Absent



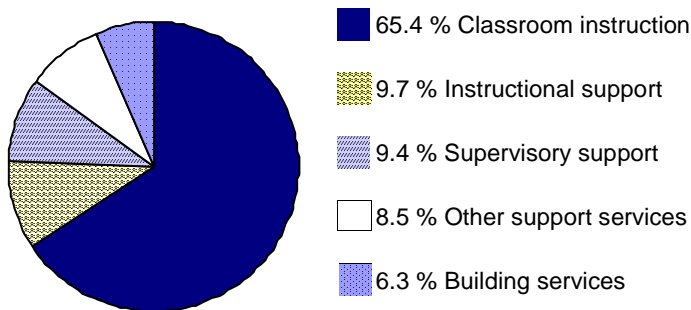
SCHOOL EXPENDITURES

Average Spending Per Student (Direct Services Only)

	2004	2005	2006
This school	\$8,789	\$9,761	N/A
Similar schools	\$11,295	\$12,059	N/A
City schools	\$11,608	\$12,511	N/A

Note: The state calculation of school expenditures per student for direct and indirect services in 2004 was \$12,896 for all New York City schools. An average of \$13,085 was calculated for all New York State schools including those in New York City.

How money was spent in this school in 2005 (Direct Services Only)



0.6% is used for District Support.

OTHER SCHOOL INFORMATION

School Capacity

Percent of utilization*	2004	2005	2006
This school	103.5	101.6	113.8
Similar schools	93.2	90.0	88.6
City schools	87.1	84.8	82.8

*When over 100%, school has exceeded official capacity.